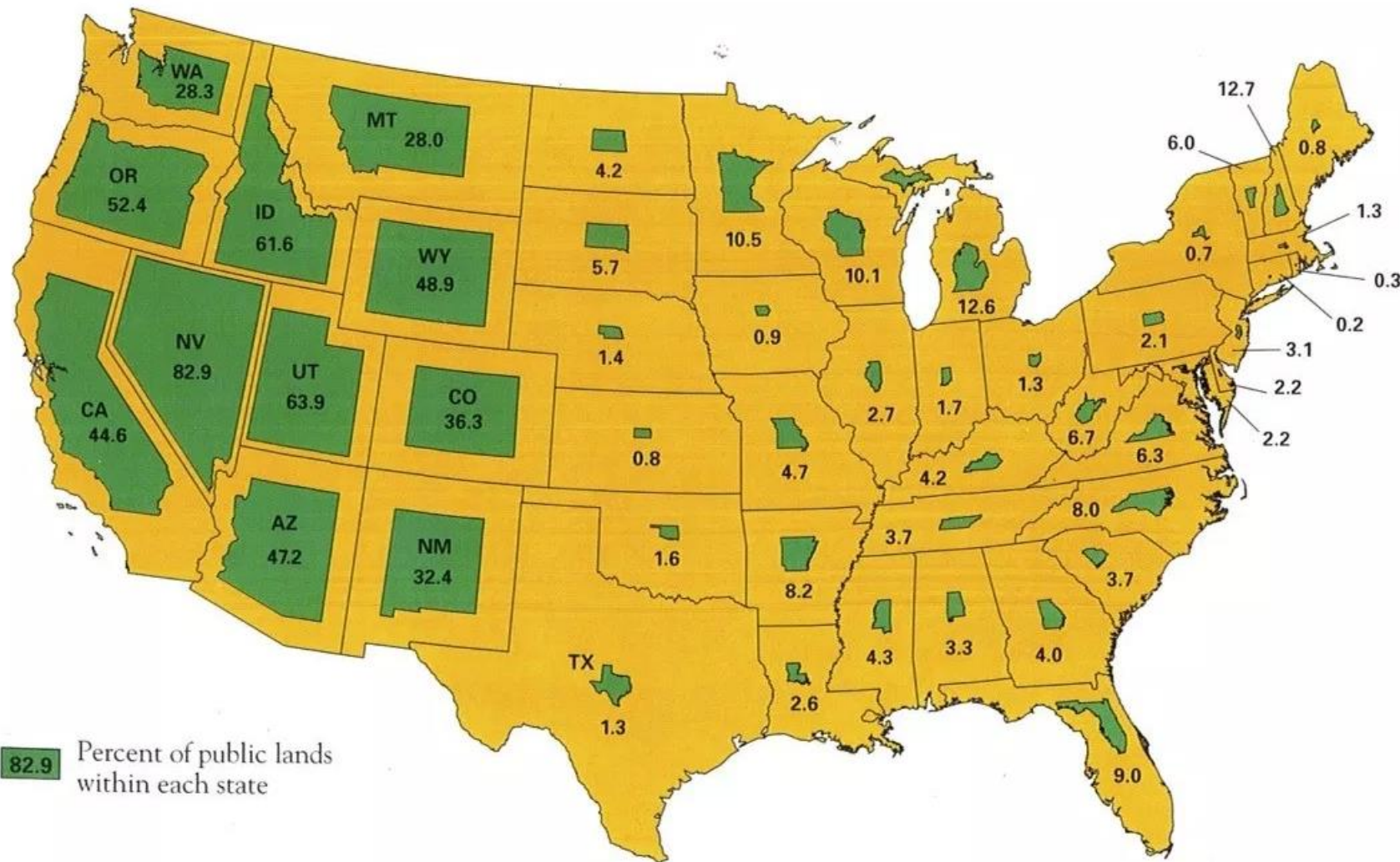


Tension as Catalyst: Land Stewardship and Development Align for a Better Rural West

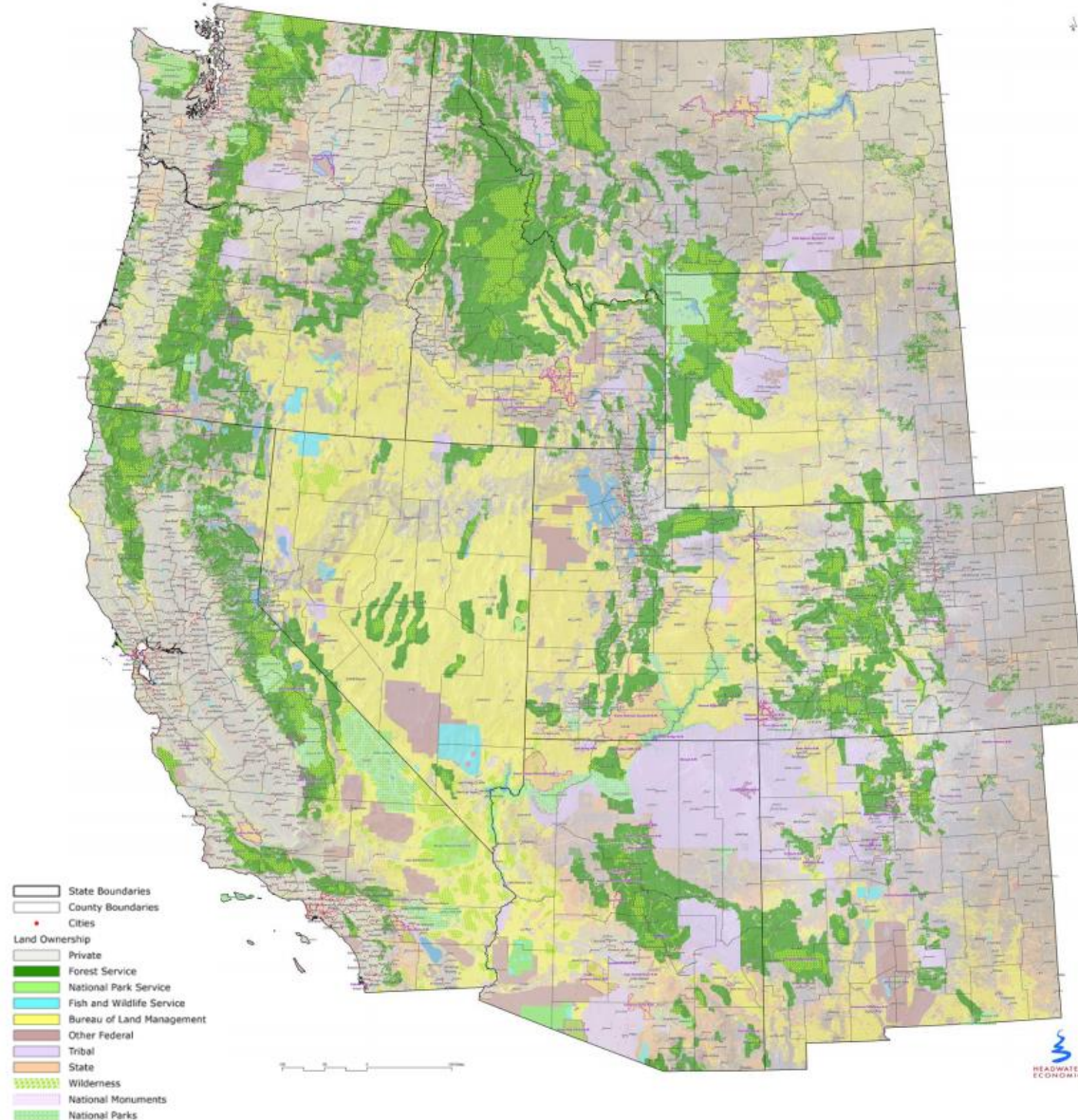


Public West, Private East



More than
Half
of the West is
Public
(federal and state)

Public West, Private East



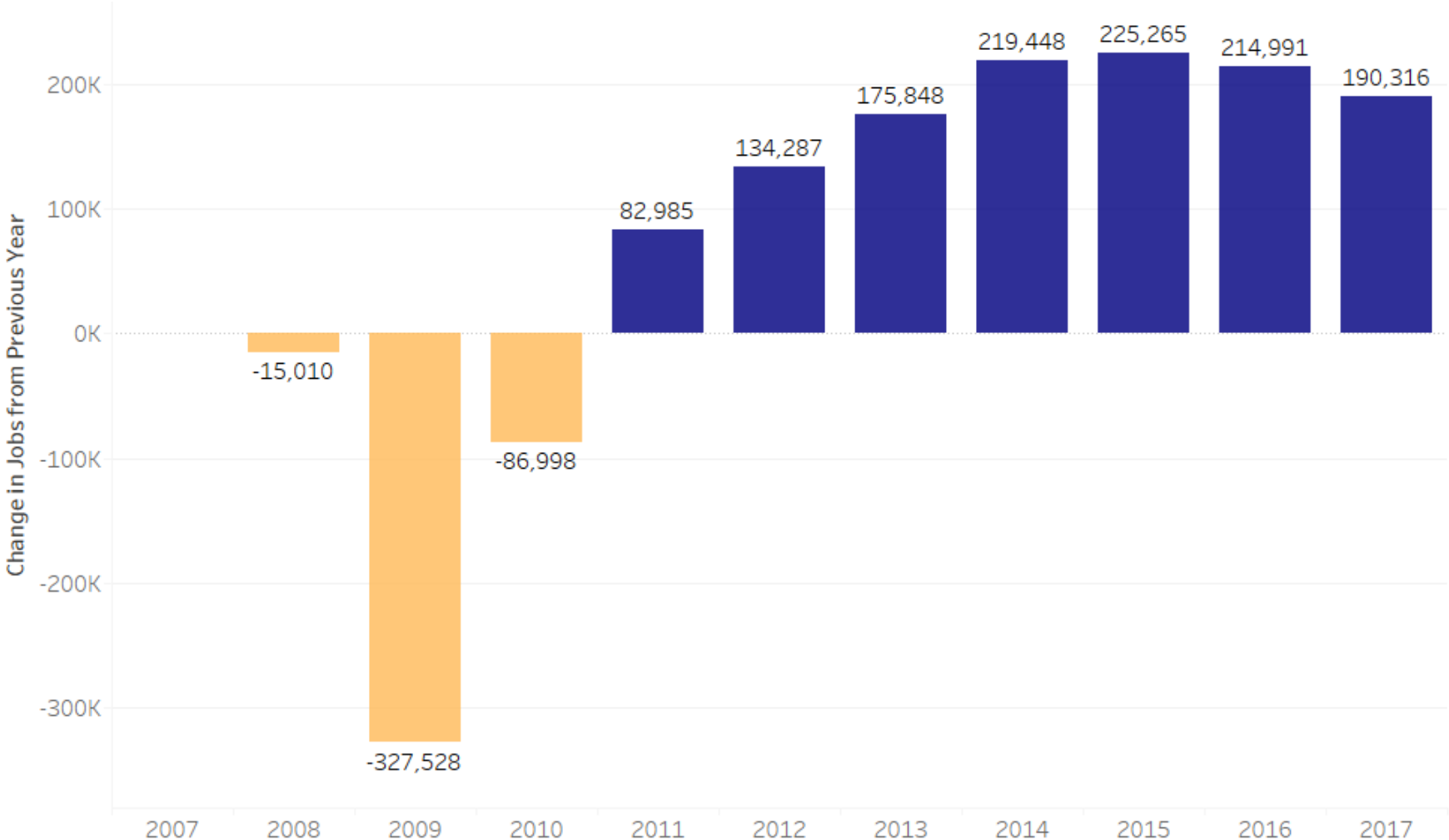
Geography

multiple agencies/

Multiple Uses

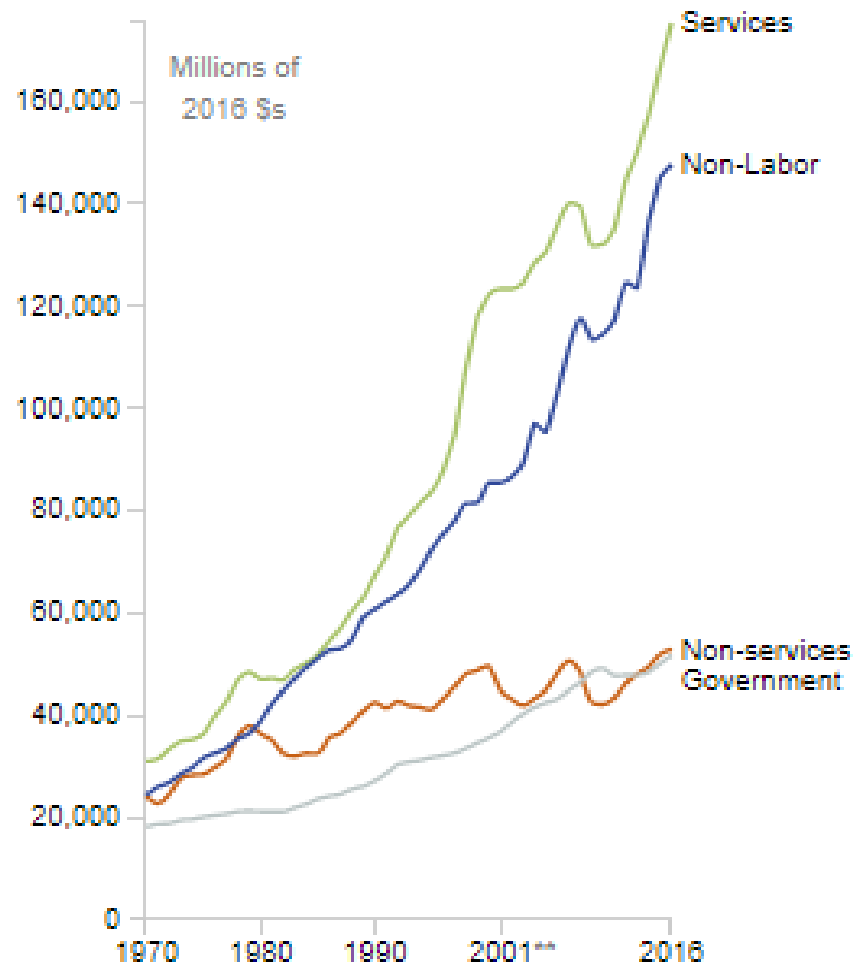
complicate management &
community planning

Pacific Northwest is Growing Faster than the U.S.



New Jobs & Income in Services and Non-Labor

Change in Personal Income by Source, Washington, 1970-2015



Services Doctors, engineers, lawyers, accountants, waiters, barbers, etc.

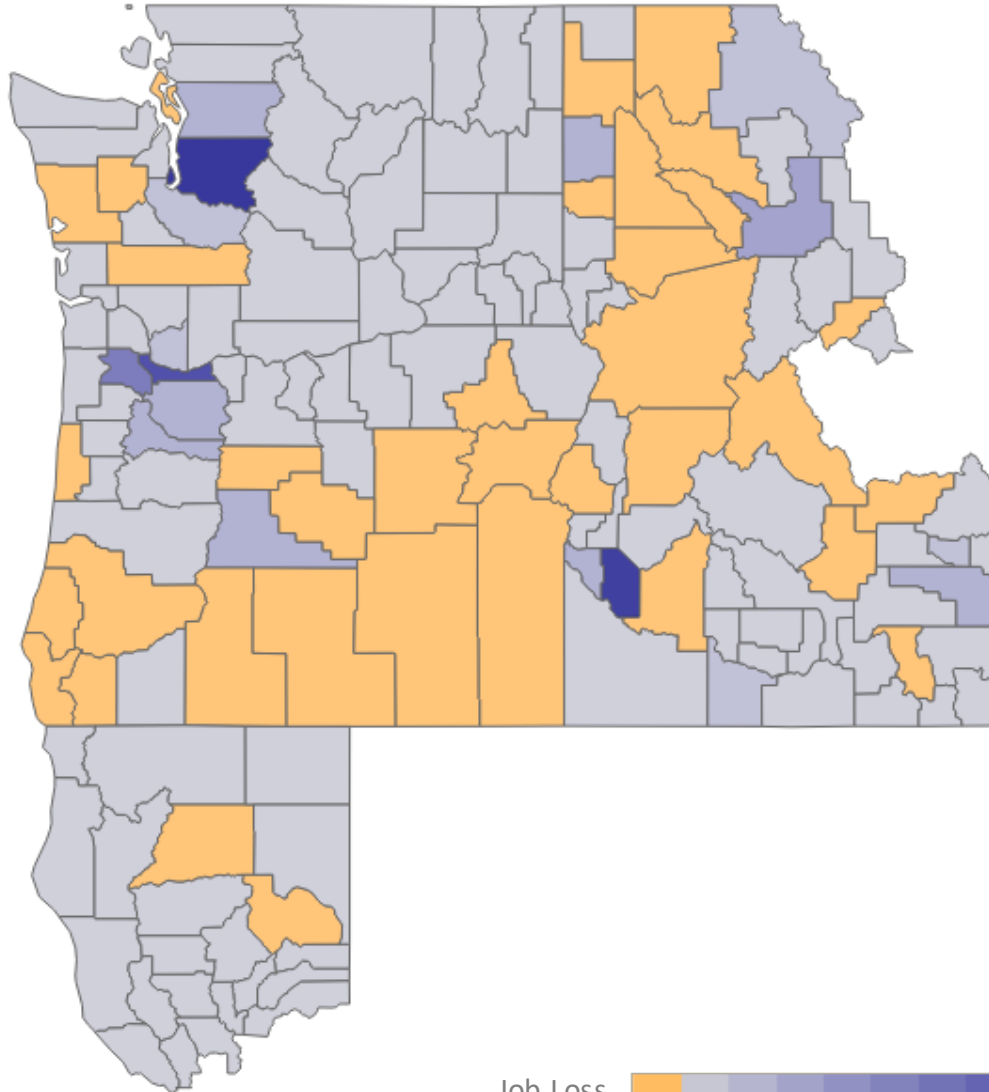
Non-Labor Retirement, investments, Social Security, Medicare, Medicaid, etc.

Non-Services Construction, manufacturing, mining, oil & gas, agriculture, etc.

Government Local, state, federal

** Data source methods changed in 2001

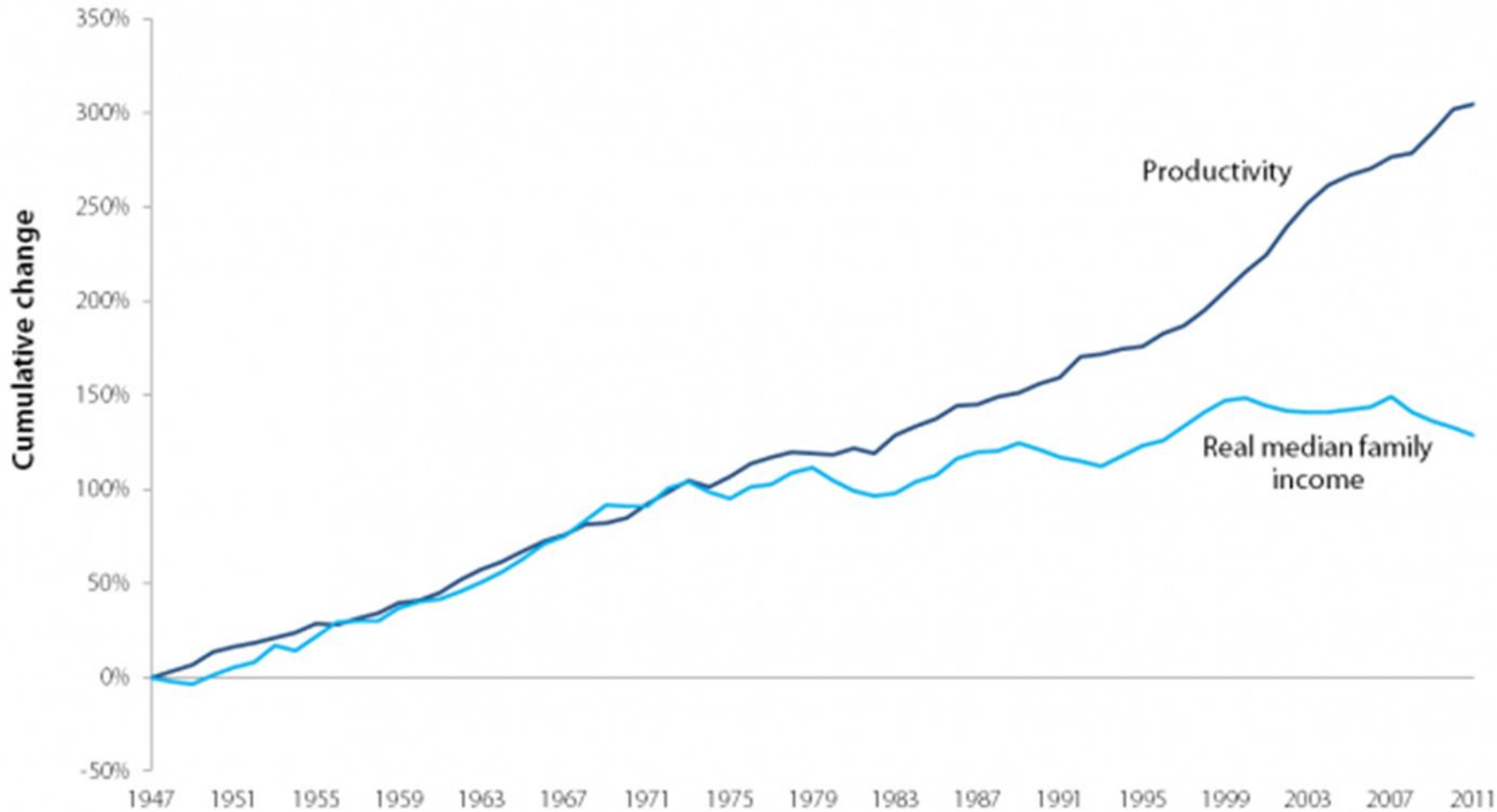
Growth is Concentrated in Major Cities



3 cities captured
73% of all new jobs
since 2007

69% of Isolated
Counties have
Fewer Jobs in
2017

The Great Decoupling



Beginning around 1970, productivity gains no longer translate to higher wages & income

Source: Authors' analysis of Current Population Survey Annual Social and Economic Supplement *Historical Income Tables*, (Table F-5) and Bureau of Labor Statistics, *Productivity – Major Sector Productivity and Costs Database* (2012)

Economic Geography: The Three Wests

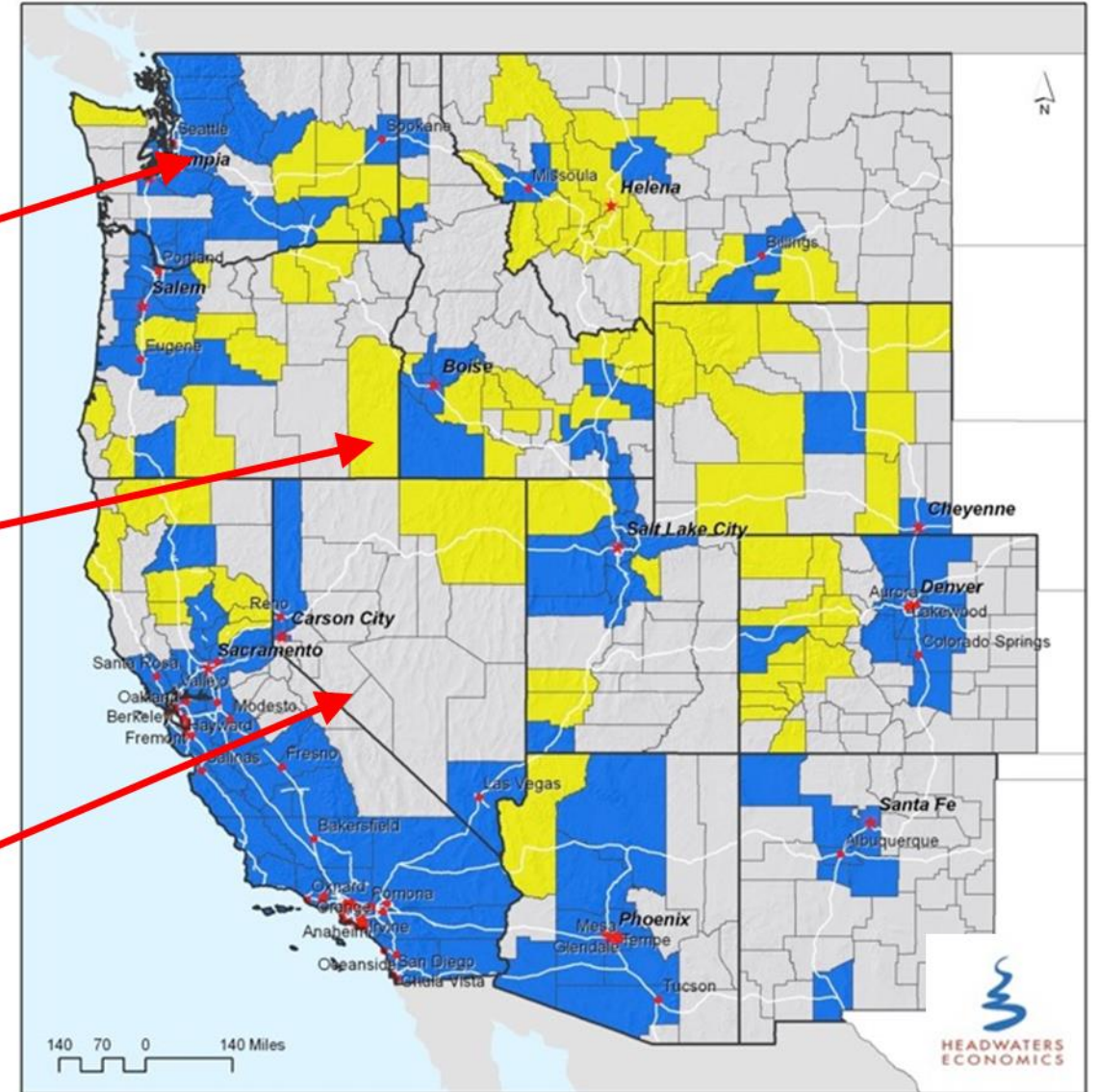
The Metro West



Connected Places

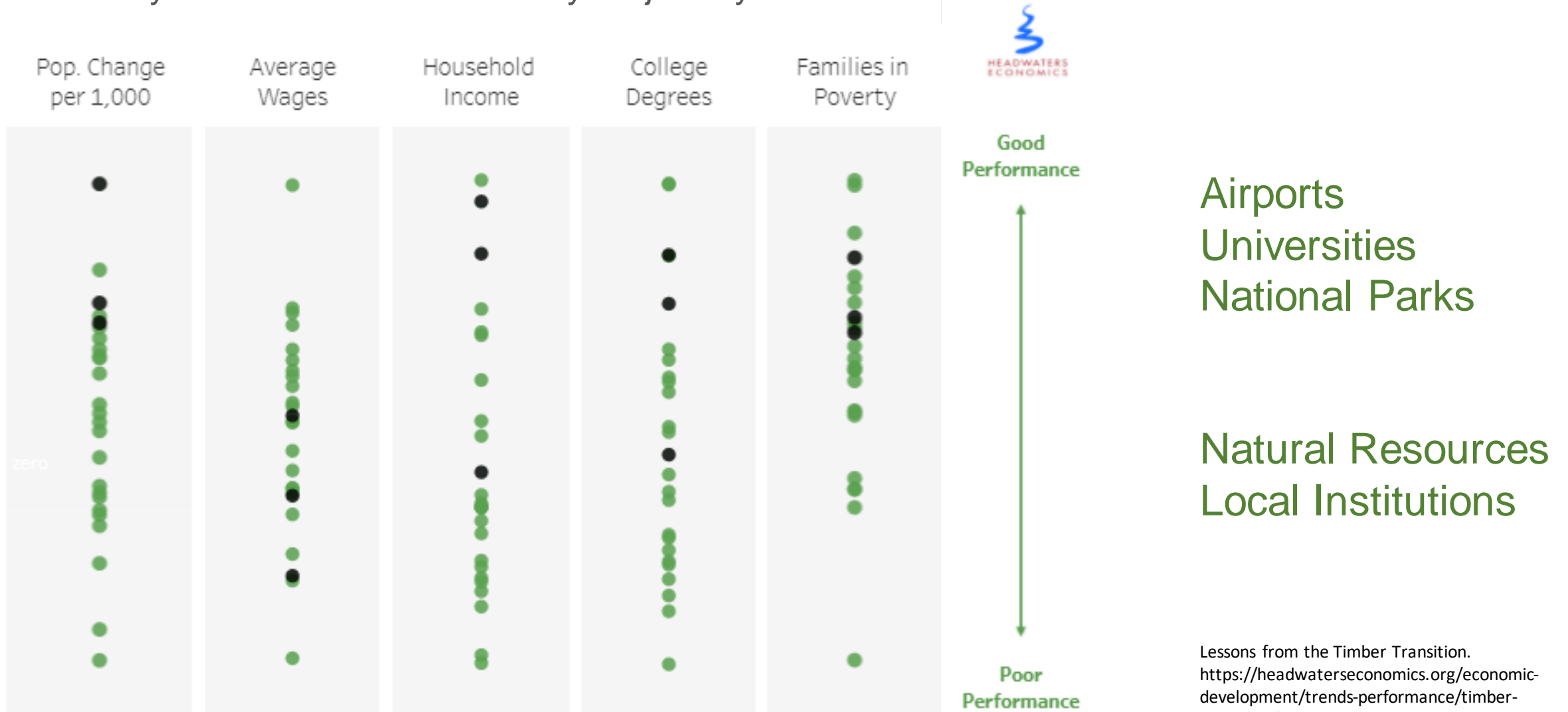


The Isolated
"Third West"



Timber Dependence ≠ Future Performance

County Performance Predicted by Trajectory in 1990



Lessons from the Timber Transition.
<https://headwaterseconomics.org/economic-development/trends-performance/timber-transition/>

A Growing Fiscal Crisis

*Where Anti-Tax Fervor Means
'All Services Will Cease'*

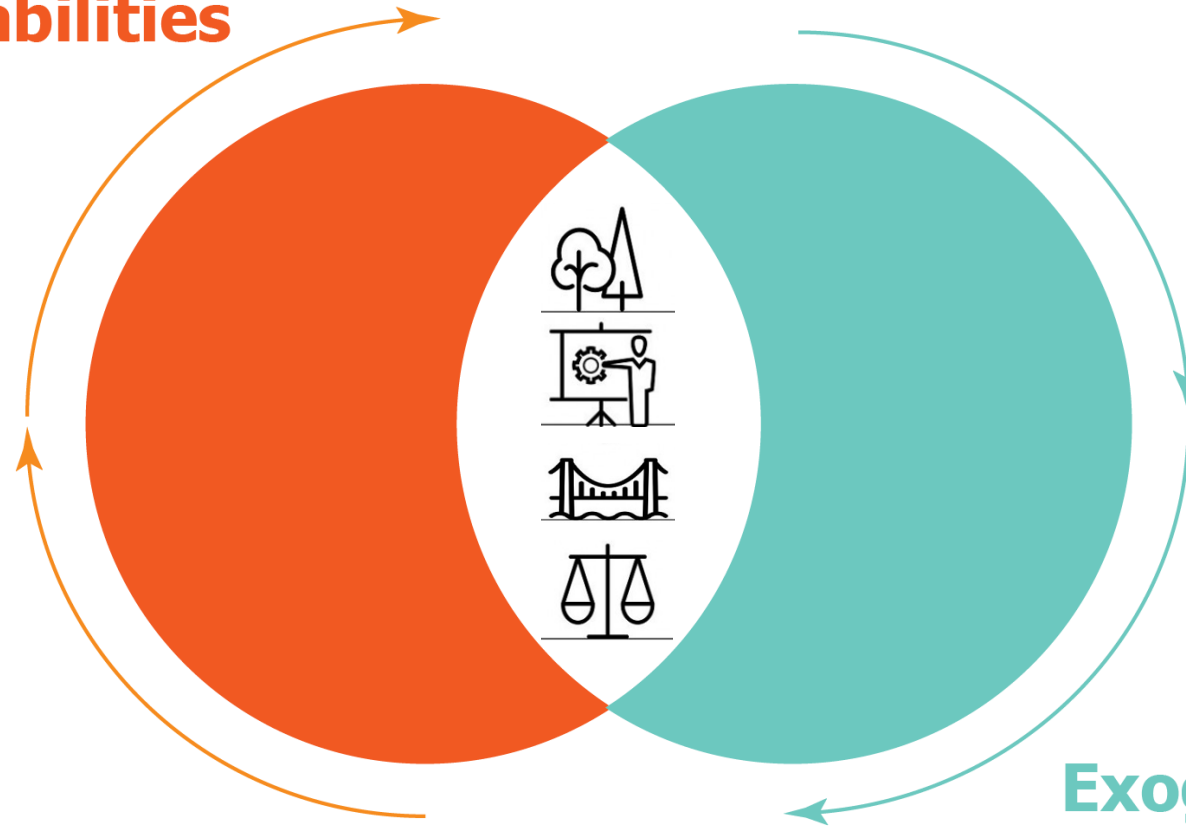


Sorting books at the library in Roseburg, Ore. A sign inside spells out its future in four words: Come June 1, "All services will cease." Ruth Fremson/The New York Times



Close the Planning Gap

Local Vulnerabilities



Exogenous Barriers