

ROAD Session Virtual Exchange

Seizing the
Moment:

Rural Development
Hubs and the
Historic Opportunity
for Federal
Resources



Today's Event Partners

Community 
Strategies Group

 THE ASPEN INSTITUTE



RURAL LISC



INTERNATIONAL
ECONOMIC DEVELOPMENT
COUNCIL



Welcome
Bonita Robertson-Hardy
Co-Executive Director
Aspen Institute Community Strategies Group

Seizing the Moment

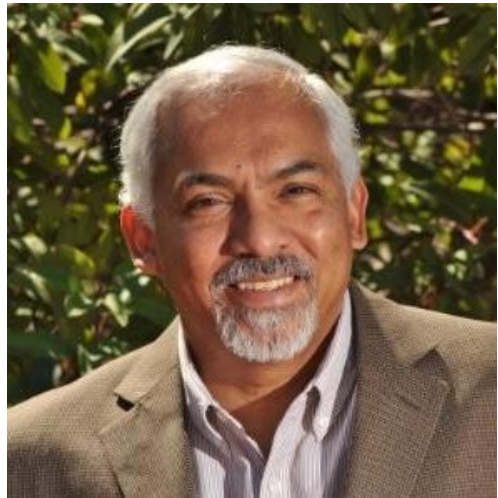
Exchange Format

- **Panel Discussion: 1:00-2:00 p.m. ET**
Our speakers share their experience with federal funding and organizational capacity efforts of rural regions and Native nations.
- **Breakout Rooms: 2:00-2:30 p.m. ET**
Optional
Join a breakout to meet others, ask questions, seek advice and share your thinking and experience. *Format: Open questions and answers, ideas and advice sharing. Each breakout will include one or more of today's speakers plus a facilitator.*

Seizing the Moment

Exchange Format

- Use the **Chat Box** to share insights or to echo/underline a panelist's point. Please share your thoughts with civility and compassion.
- Use the **Q & A Box** to ask your question of the speakers.
Participant questions will be addressed during the event, in the last 20 minutes of the panel discussion, and during the 30-minute follow-on breakout session.



Today's Moderator

Roque Barros

Executive Director

Imperial Valley Wellness Foundation

Eric Swack

Chief Executive Officer
Mountain | Plains CDC



Jael Kampfe

President
Indigenous Impact Co.

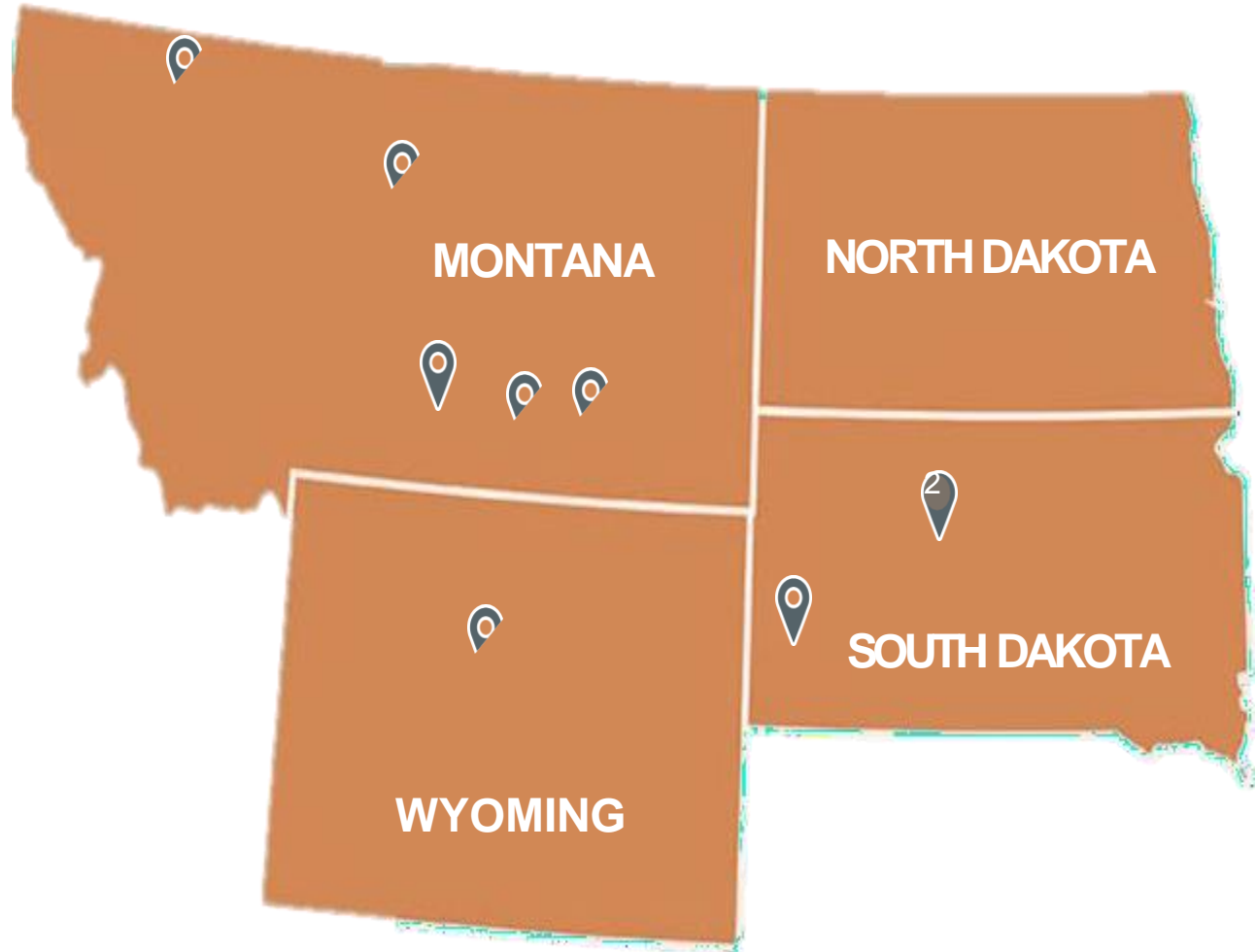




Mountain | Plains Regional Native CDFI Coalition



Who We Are | 9 NCDFs formed the Coalition in February 2022

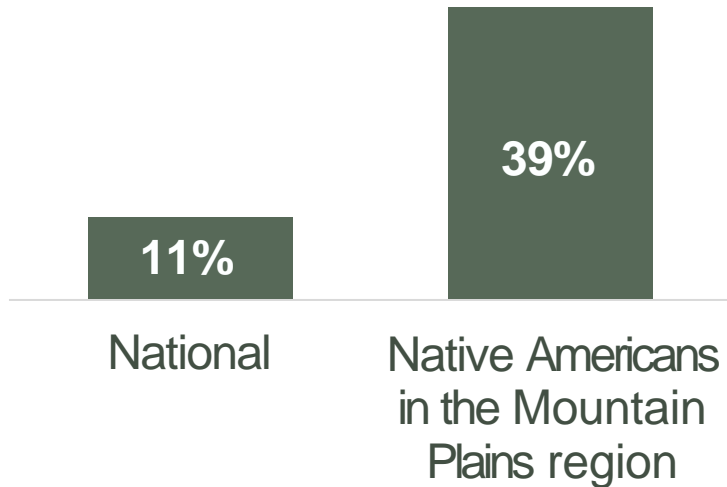


A Broken System | Native communities have been left behind

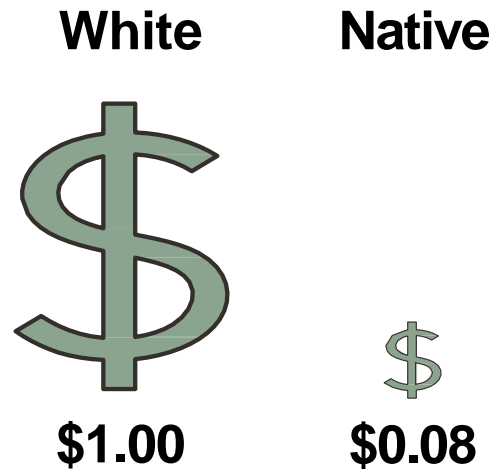


By design, mainstream economic systems oppress & exclude Native communities.

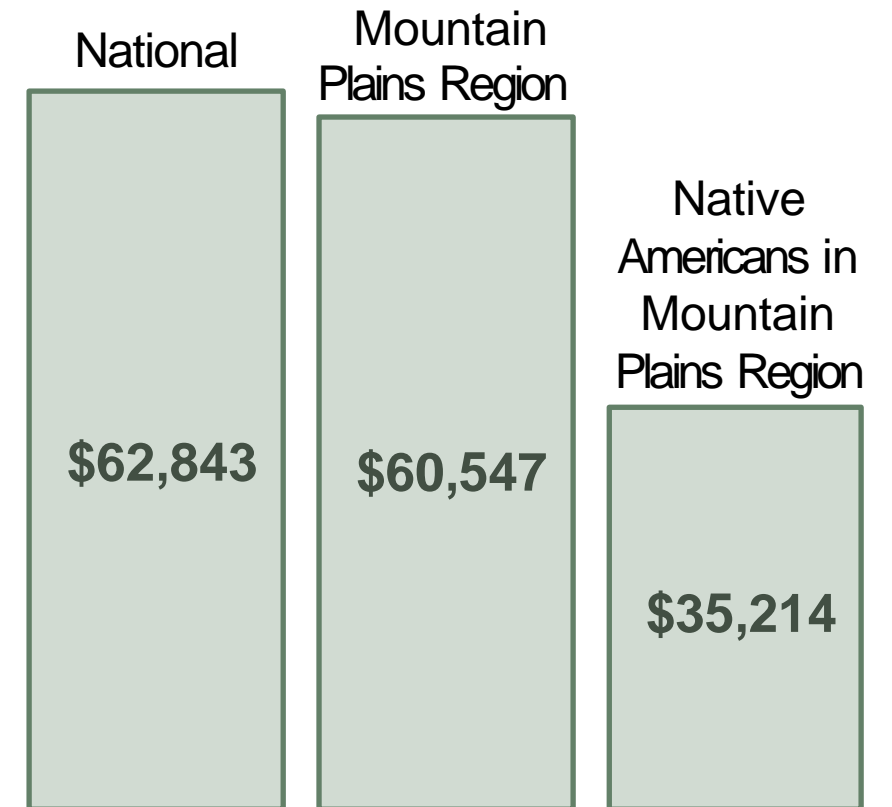
Percentage of Communities Living in Poverty



Racial Wealth Gap: Household Wealth

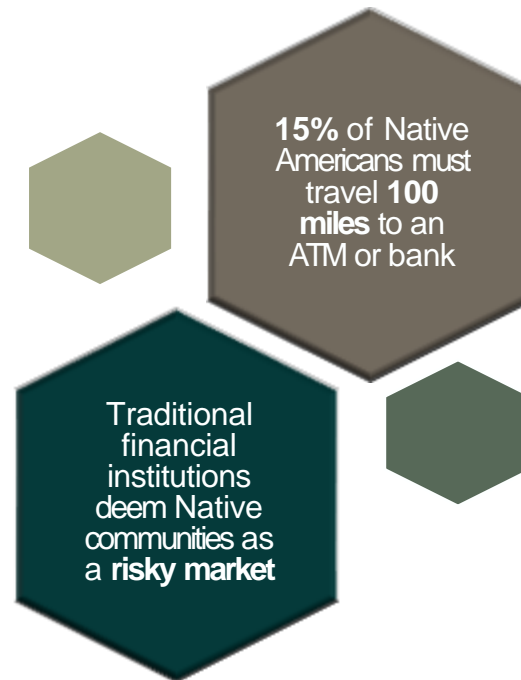
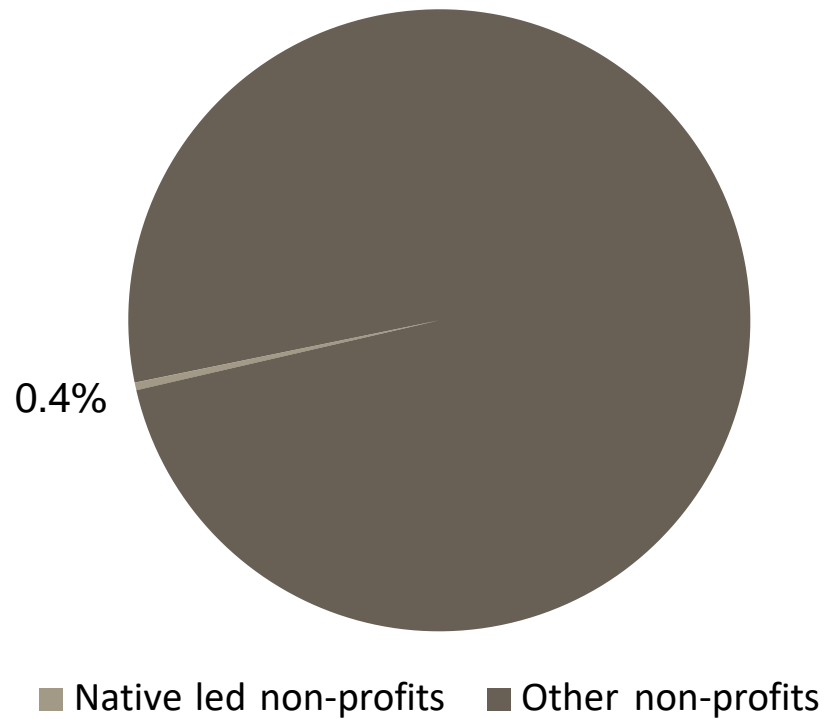


Median Household Income

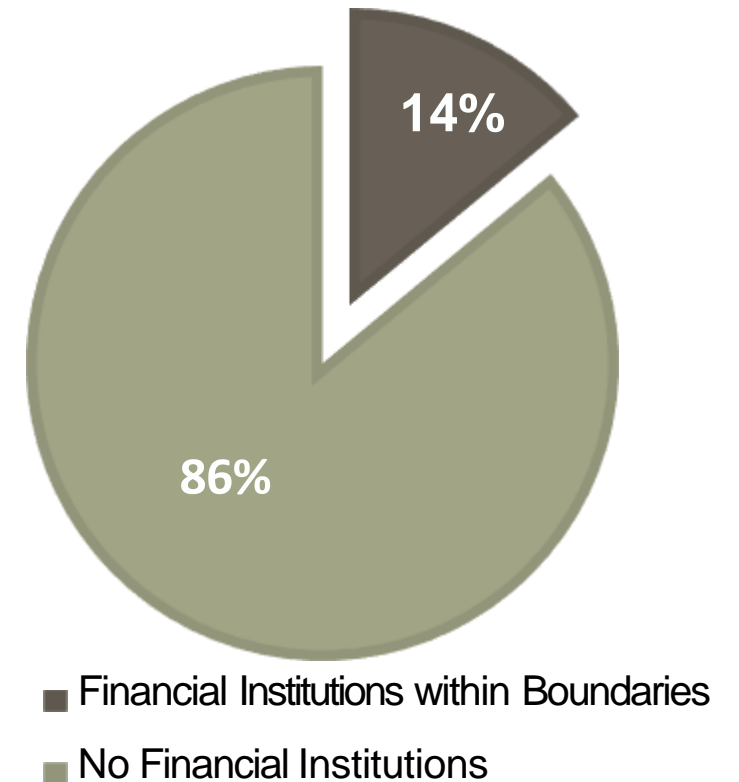


Systemic barriers prevent Native access to capital resulting in persistent poverty.

Annual Private Funding 2002-2006



Reservations with Financial Institutions



Mountain | Plains Regional Native CDFI Coalition works at a systems level to address racial equity.

This requires

A collective approach

- Systems change requires a networked approach, with strategic partners each doing the work internally and externally.
- We are unifying action through a well-networked, industry-level, long-term peer to peer Coalition.

Explicitly understanding values informing the system

- We emphasize holistic, relationship-based solutions grounded in Indigenous values and culture.
- Indigenous values provide the antidote for Colonial Capitalism and thus for racial equity.
- We engage partners as colleagues, sharing power and learning as a vital part of new systems.

Centering Native Innovation & resilience

- Native leaders adapt and innovate in essential ways to best serve their communities.
- When this innovation is centered, systems change happens and communities benefit.

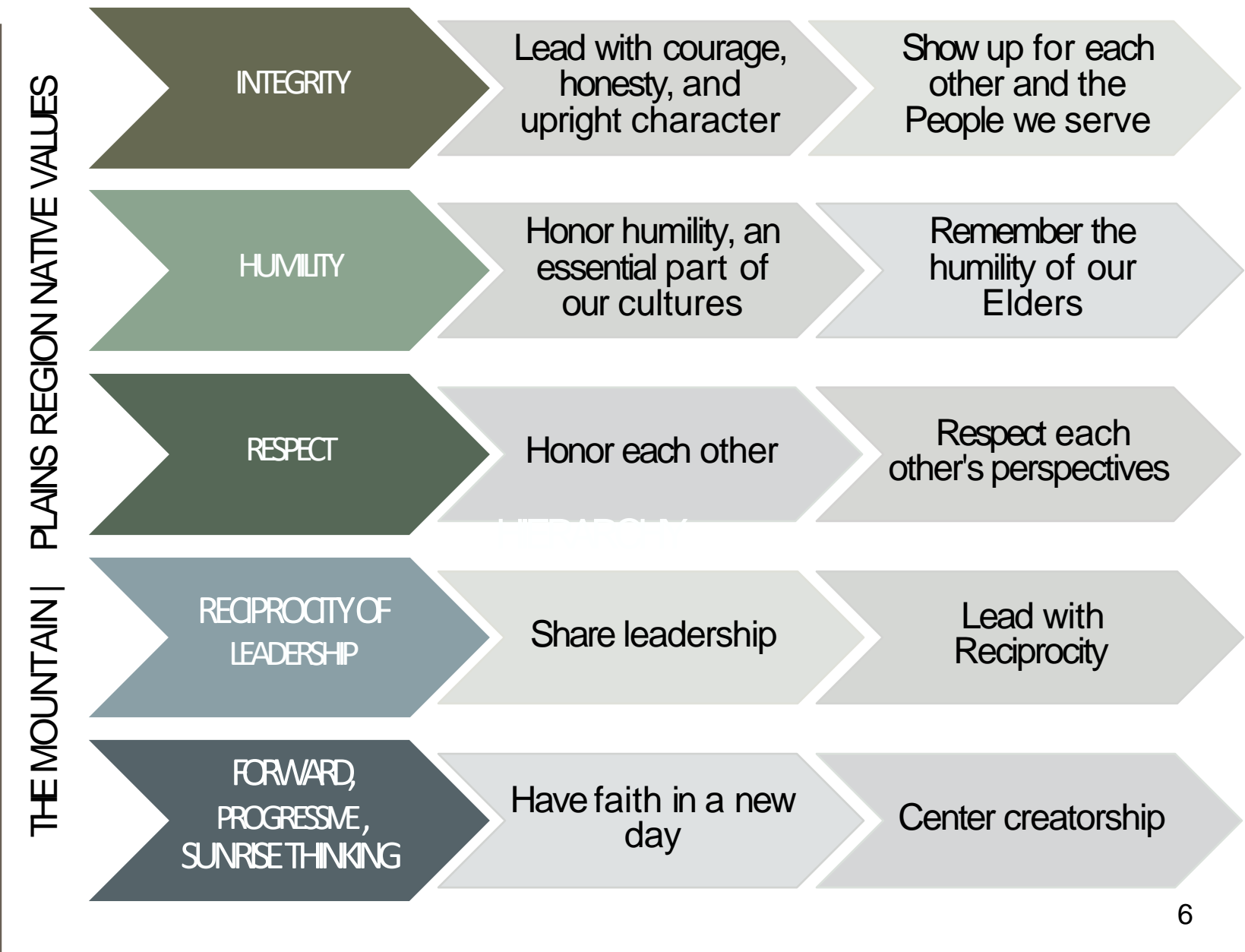
Regional peer-to-peer Coalitions, led by people of color, are systems already addressing racial equity.

This is the power of the Mountain | Plains Regional Native CDFI Coalition.

Values & Culture | A new economic system fueled by Indigenous values & culture



Native *Community Development Financial Institutions* (CDFIs) emphasize holistic, relationship-based solutions grounded in Indigenous values and culture.



Native CDFI female leadership catalyzes systemic change.



Native Women in Leadership



Women comprise **72%** of Native CDFI Leadership



Women comprise **64%** of Oweesta Visionary Leaders

- Outstanding achievement for long-term contribution to the Native CDFI's



Women comprise **46%** of CDFI Leadership

- Only **27%** are women of color

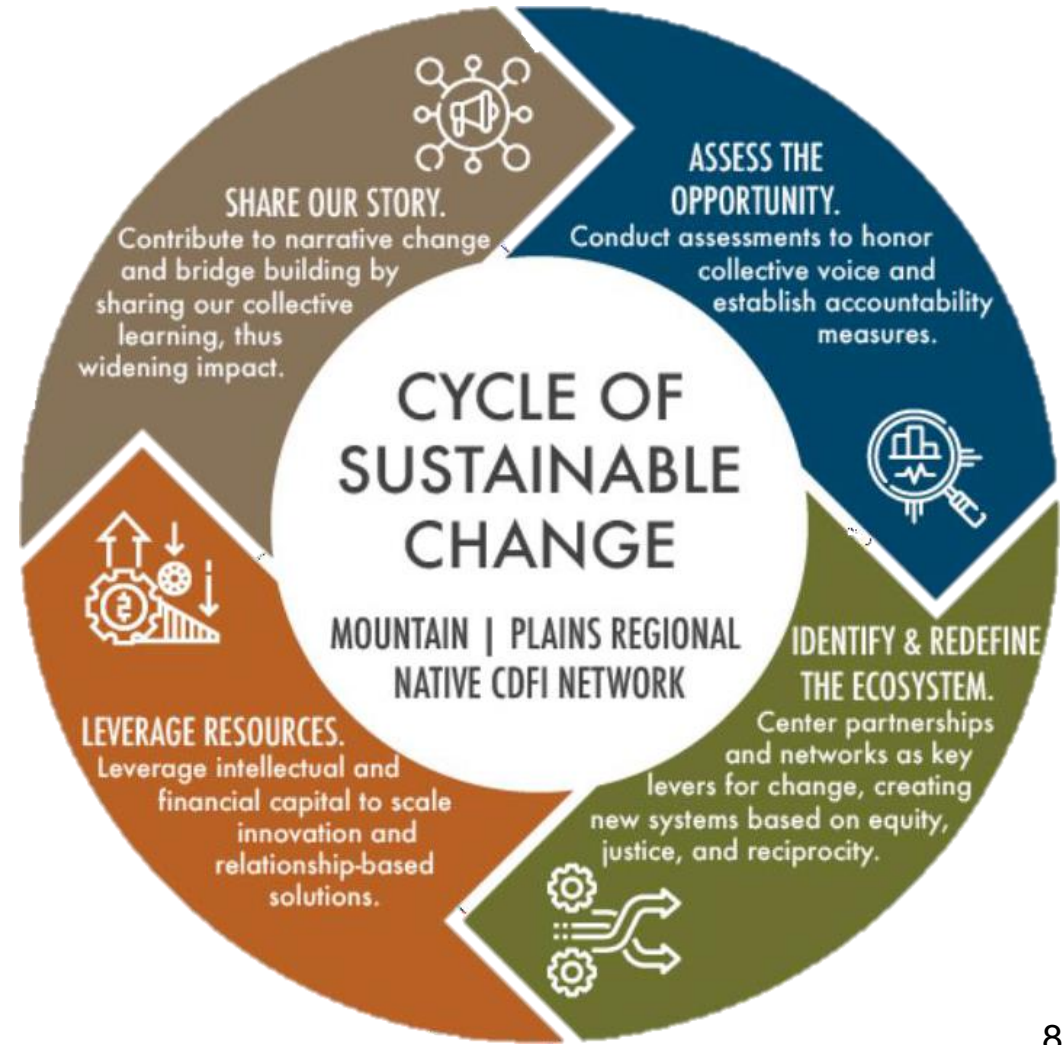
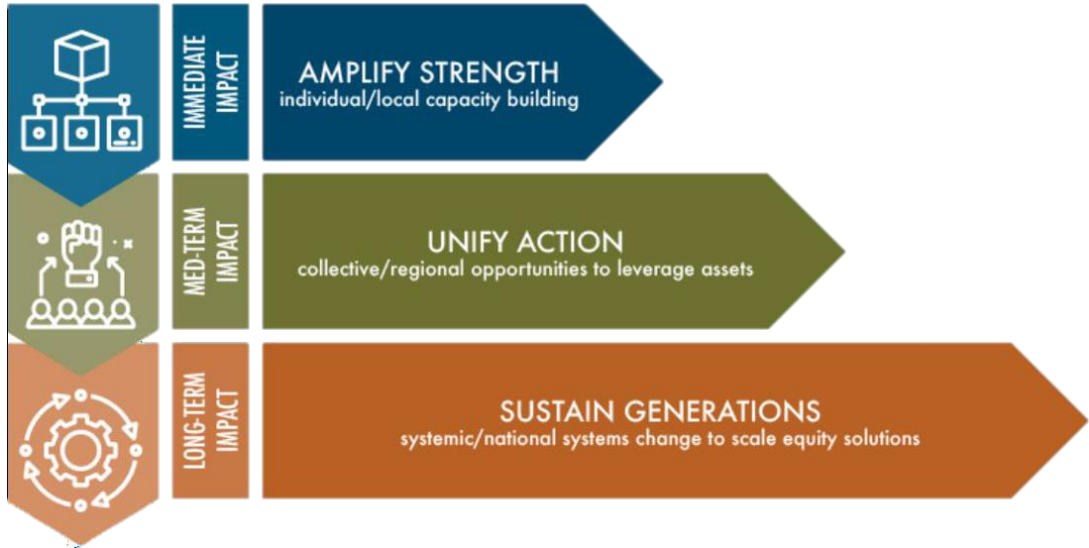


Women only comprise **27%** of Financial Services Leadership

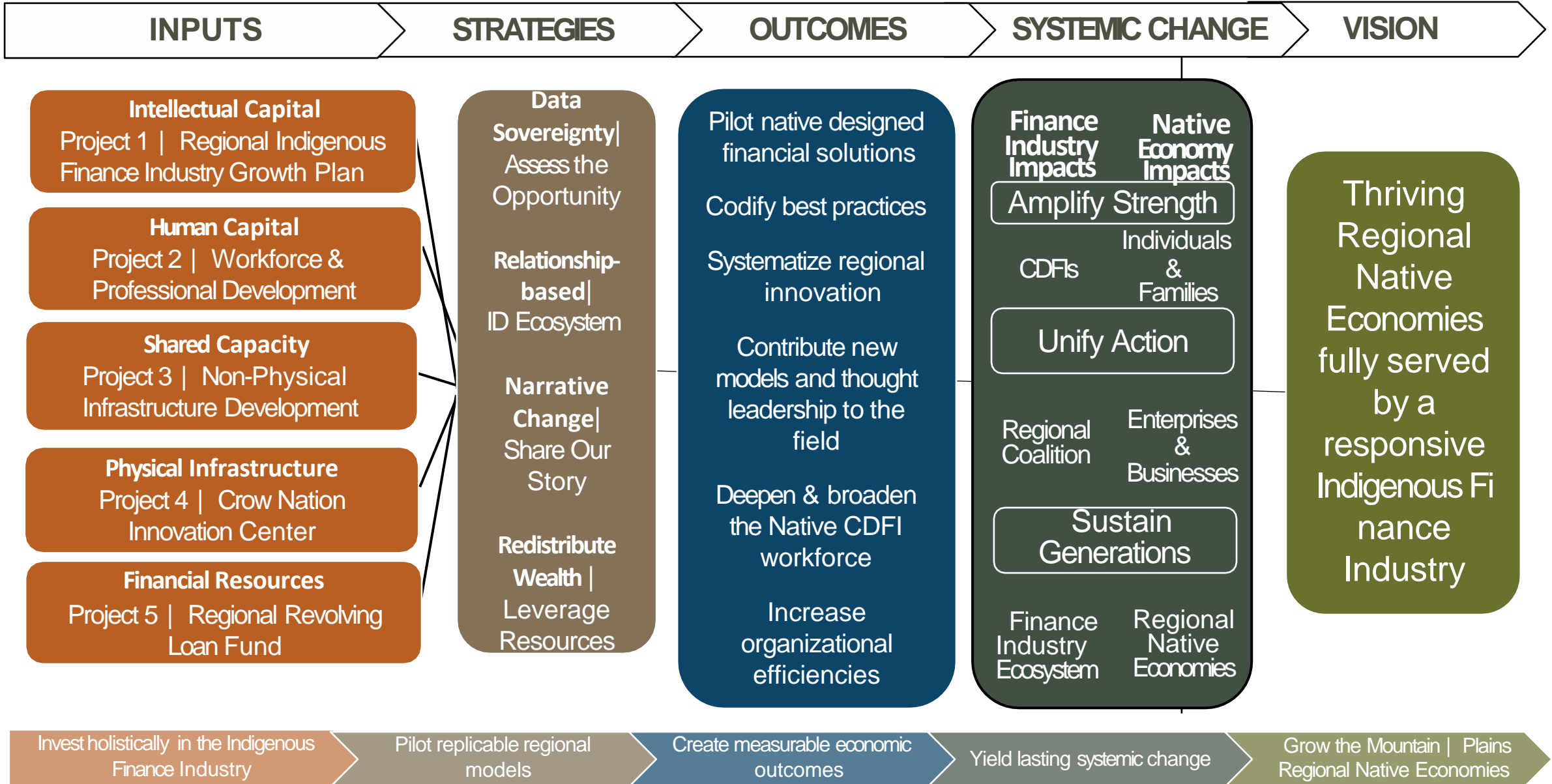


Women only comprise **26%** of Tribal Leadership

Native CDFIs are integrating Native values & culture into systems, strategies, and practices.



The Vision | Systemic change promoting equity



Reimagine and fortify a regional, replicable model of regenerative economics.



Commit to long-term partnership

Transform internal systems

Acknowledge power & influence

Listen, learn, innovate

Co-create through shared values

How to join us...

- Quarterly calls
- Philanthropic dollars
- Loan capital

Members of the Mountain | Plains Regional Native CDFI Coalition

Charlene Johnson

Plenty Doors Community Development Corporation
Cfjohnson@plentydoorscdc.onmicrosoft.com

Lakota Vogel

Four Bands Community Fund
lakota@fourbands.org

Sharon Small

The People's Partners for Community Development
sksmall@hotmail.com

Paul Huberty

Wind River Development Fund
paul@wrdf.org

Barbara Schmitt

Black Hills Community Loan Fund, Inc.
barbaras@bhclf.org

Angie Main

NACDC Financial Services, Inc.
angiem@3rivers.net

Eric Swack

Mountain Plains CDC
eric@mountainplainscdc.org

Skya Ducheneaux

Akiptan, Inc.
skya@akiptan.org

Sue Taylor

Native American Development Corporation
staylor@nadc-nabn.org

Kerry Shabi

Island Mountain Community Development Financial Institution
kerry@nativegrowth.org

For more information, please contact:



Jael Kampfe

Regional Competitiveness Officer, Indigenous Impact Co.

406-671-9209 | 305 E Main St | Bearcreek, MT 59007
Jael@IndigenousImpact.Co | www.IndigenousImpact.Co

Brandon Dennison
Chief Executive Officer
Coalfield Development



Marilyn Wrenn
Chief Program Officer
Coalfield Development





Brandon Dennison,

CEO

Marilyn Wrenn,

CPO

Coalfield Development:

rebuilding the Appalachian
economy from the ground up

Our Vision

Resilient rural communities with socially, environmentally, and financially thriving economies which create the community conditions for all kinds of people to unlock their full **potential, power, and purpose.**



Outcomes and Scale

- 700 new jobs
- \$100 million in new investment leveraged
- Over 72 new businesses supported
- Over 260,000 square feet of abandoned property redeveloped
- Over 1,750 people re-trained
- And most importantly: agency, dignity, and hope restored
- 12 different communities have begun replicating the model
- World Bank partnership to train coal communities around the world on the model

THE MODEL TODAY

Our Mission:

Inspiring the **courage to grow, activating the **creativity** to innovate, and cultivating **communities** of opportunity in central Appalachia through four core capabilities:**

- Incubate and invest in employment social enterprises (ESEs)
- Provide personal, professional, and academic development for people facing barriers to employment
- Lead community-based real estate development
- Design and scale new programs in emerging sustainable sectors

Incubating And Growing Employment-Based Social Enterprises

We wholly or partially own a family of employment-based social enterprises designed to diversify the regional economy to be less dependent on coal. By “employment-based” we mean enterprises that exist for the purpose of advancing the well-being of its employees, which we do primarily through our personal and academic development programming.



Facilitating Professional, Personal, And Academic Development For People Facing Barriers To Employment

Our personal and academic development programming helps prepare the workforce for new economic opportunities and is comprised of two parts: **Workforce Readiness and Professional Success (WRAPS)** and **33-6-3**.

WRAPS

six months program
33 hours paid work and training/week
3 hours of personal development.
4 hours barrier removal

33-6-3

1 – 3 year program
33 hours paid work and training/week
6 hours higher education
3 hours personal development



Leading And Collaborating On Community-Based Revitalization Projects

As a licensed general contractor, we advance bold, creative projects in deep collaboration with the communities we serve. Our projects are designed and ultimately owned by the community. We keep a project pipeline full beginning with predevelopment and financing, entering construction, and then into operation as community assets. Our projects are **mixed-use, and mixed-income** blending residential and commercial purposes and building economic diversification. Rejuvenating empty buildings or former mine-lands is a major strategy:

- breathes new life into our communities
- preserves cultural treasures
- attracts fresh investment
- provides opportunities for entrepreneurship
- creates quality, affordable housing



Designing and Scaling New Programs in Emerging Sustainable Sectors

Rebuilding the Appalachian economy from the ground up takes exploration and experimentation – and big ideas!

- **ReUse Corridor** – a coalition of businesses, individual stakeholders and communities throughout central Appalachia who are building a market around reuse, upcycling & recycling
- **Refresh Appalachia** – a program of Coalfield Development focused on developing, shaping and supporting the regenerative and sustainable agriculture sector in central Appalachia
- **Appalachian Climate Technologies NOW (ACT NOW) Coalition**





ACT NOW COALITION

APPALACHIAN CLIMATE TECHNOLOGY

NORTH STAR GOAL:

A just transition from coal that establishes WV as the global leader in climate resilience



ACT NOW COALITION

APPALACHIAN CLIMATE TECHNOLOGY



STRATEGIC THREADS

- CLIMATE RESILIENCE/MITIGATION
- ENVIRONMENTAL JUSTICE
- COMMUNITY ENGAGEMENT AND EQUITY
- RESILIENCE PLANNING/INFRASTRUCTURE
- GREEN-COLLAR WORKFORCE DEVELOPMENT
- GREEN CONSTRUCTION/PRESERVATION
- ENTREPRENEURSHIP
- TECHNOLOGY



Plus 50+ private businesses



OVERARCHING OUTCOMES:
\$1.5 Billion in Green Investment
3%↓ in Poverty
4%↑ in Labor Participation

Total Federal Request: \$62,807,789 Total Non-Federal: \$28,204,377 Total Project: \$91,012,146

Over 529 first-round applicants with 21 second-round winners. ACT NOW received the nation's 3rd highest award.

EXPECTED OUTCOMES over the life of the grant:

- **6,405** new well-paying jobs (many being union jobs)
- Create or expand **380** businesses
- **\$813 million** in private investment in the four-year grant cycle, with an expected \$600 million to follow
- **94,470 GHGs** and sequester **3,469,500 pounds of carbon**
- Equity: **75%** hired from HEC communities



Thank you.

Please contact me at

bdennison@coalfield-development.org

for additional information

or visit

coalfield-development.org

Q&A Session

Moderated by Roque Barros



Join us for the breakout room discussion

- To enter the breakout session: Simply use the Zoom breakout link provided in the Chat Box.
 - We sent every registered email that link again during this hour.
 - A survey will pop up when you close the webinar. Please take a moment to fill it out as we transition.
 - Each room will include speakers and a facilitator – it may take a few minutes to get them sorted into the right room.