

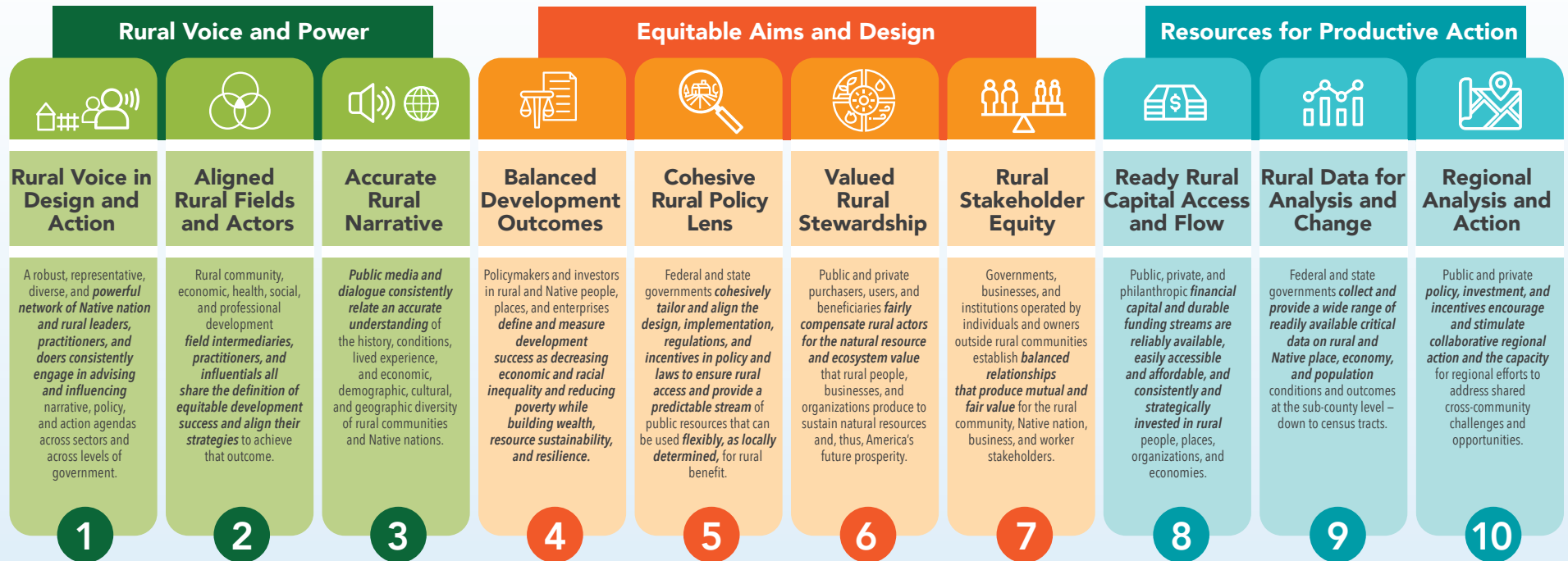


# SYSTEMS-LEVEL BUILDING BLOCKS

## THRIVE RURAL FRAMEWORK SYSTEMS-LEVEL BUILDING BLOCKS



The Systems-Level Building Blocks include driving forces and conditions that are in larger systems **outside the direct control of individual rural communities or regions**. People and organizations that design, guide, and implement these systems must act to change them — and rural places and people can (and must) act together to influence them. These include a wide range of public and private systems, from regional and multi-state financial institutions, to state and federal policy and programs, to issue advocacy organizations, to information hubs and national media — and more. Each Building Block (1-10) is necessary because it has an impact on being able to achieve more widespread and equitable rural prosperity.



Use these Systems-Level Building Blocks to take stock, target action, and measure progress on the status of systems. Those who lead and work in systems can change them directly; rural people and organizations can exercise influence to guide that change. In either case, for each Building Block (1-10), ask:

- How “true” is this Building Block statement?
- What discriminatory practices or policies exist within the system that hinders progress?
- In the context of our work — locally or at the systems level — which of these Building Blocks are priorities for our action?
- What can we do to strengthen those priority Building Blocks?
- What would indicate progress in strengthening these Building Blocks? What would that progress look like over the next year?